

# ***LIFT TRUCK ATTACHMENT AUTO GRIP***



## **INSTRUCTION MANUAL**

VALLEY CRAFT, INC. 2001 SOUTH HWY. 61, LAKE CITY, MN 55041 PH: 1-800-328-1480

11/02  
REV 7/03

Z41450A2

## **TABLE OF CONTENTS**

<b>A.</b>	<b>OPERATING INSTRUCTIONS</b>	<b>PG. 3</b>
<b>B.</b>	<b>SAFETY INFORMATION</b>	<b>PG. 4</b>
<b>C.</b>	<b>ASSEMBLY INSTRUCTIONS (UPS)</b>	<b>PG. 5</b>
<b>D.</b>	<b>PARTS DIAGRAM &amp; PARTS LIST</b>	<b>PG. 6-7</b>
<b>E.</b>	<b>TROUBLESHOOTING GUIDE</b>	<b>PG. 8</b>
<b>F.</b>	<b>LOAD SPECIFICATIONS</b>	<b>PG. 9</b>
<b>G.</b>	<b>WARRANTY STATEMENT</b>	<b>PG. 10</b>

## A. Operating Instructions

**NOTE: IT IS RECOMMENDED THAT ALL OPERATORS PRACTICE OPERATION OF THE DRUM GRIP AND ITS CONTROLS WITH AN EMPTY DRUM BEFORE USING IT ON FULL DRUMS TO FAMILIARIZE THEMSELVES WITH THE MACHINE AND TO DEVELOP SAFE WORKING HABITS.**

1. Insert forks of lift truck into fork tubes of drum grip.
2. Attach safety chain by wrapping it around carriage and clipping safety hook back to the chain.
3. Adjust turnbuckle setting for drum size. Start by adjusting the turnbuckle so the jaw tips measure about the same distance apart, as the measurement of the inside diameter of the barrel being lifted.
4. Next tilt the forklift carriage forward so the mast is less than 90° to the floor, and drive in to the barrel.
5. Pressure against the barrel needs to be applied to the back of the grips as you start lifting the barrel.
6. To load using 3” jaws (for plastic drums): Grip drum below top chime. Jaws should go around drum as operator advances truck and will grip drum as carriage is raised.
7. To load using 6” jaws (for steel and fiber drums): Grip drum in center between ribs. Jaws should go around as operator advances truck and will grip drum as carriage is raised.
8. As you raise the forks, the drum grip arms will drop, exerting an inward pressure on the jaws which mechanically grips the drum with a firm and even pressure. **NOTE: The turnbuckle may need some adjustment to give it an even grip on the barrel. If the drum slips on your first try, do not assume that the turnbuckle must be tightened!** The correct move maybe to loosen it (if the turnbuckle is set too tightly, the mechanical gripping feature will be impaired).
9. With the barrel lifted off the ground the mast maybe returned to 90°.
10. After setting the drum down, continue lowering the forks a couple inches before backing away.

**NOTE:** The 6” jaws are designed to pick up steel and fiber drums 18”-28” in diameter.

The 3” jaws are designed to pick up 23” plastic

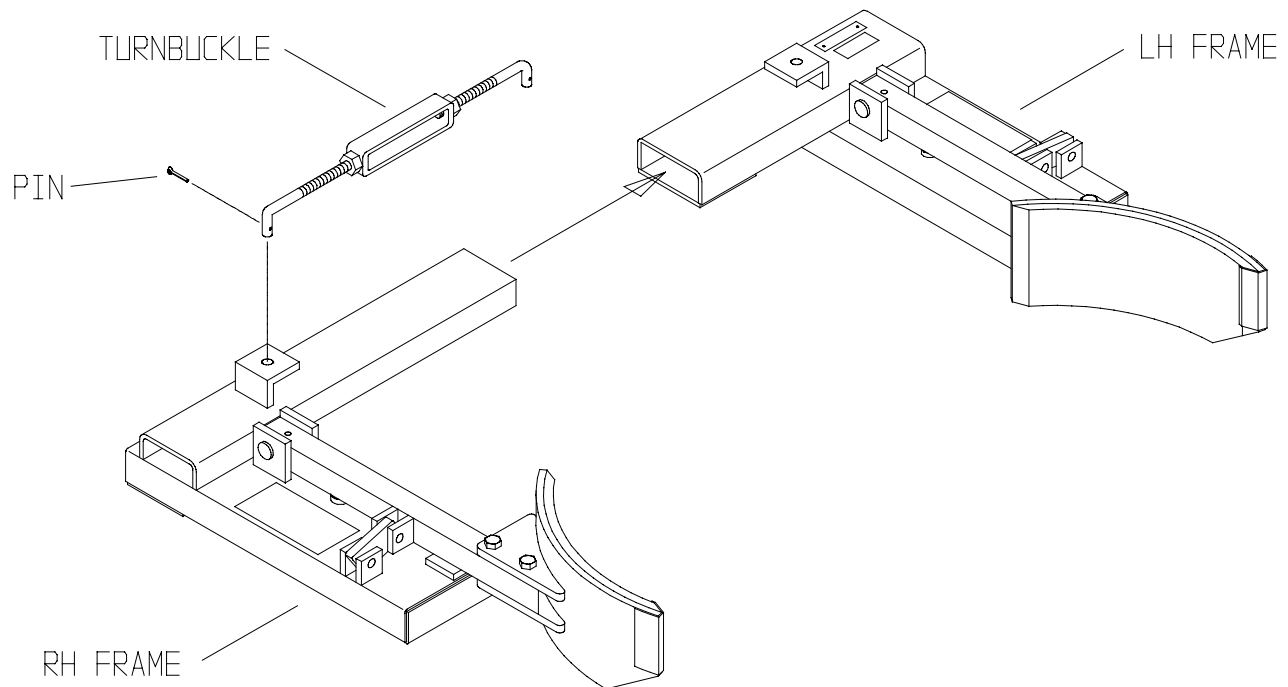
## B. Safety Information

**NOTE: IT IS RECOMMENDED THAT ALL OPERATORS PRACTICE OPERATION OF THE DRUM GRIP AND ITS CONTROLS WITH A DRUM OF WATER BEFORE USING IT ON DRUMS OF PRODUCT TO FAMILIARIZE THEMSELVES WITH THE MACHINE AND TO DEVELOP SAFE WORKING HABITS.**

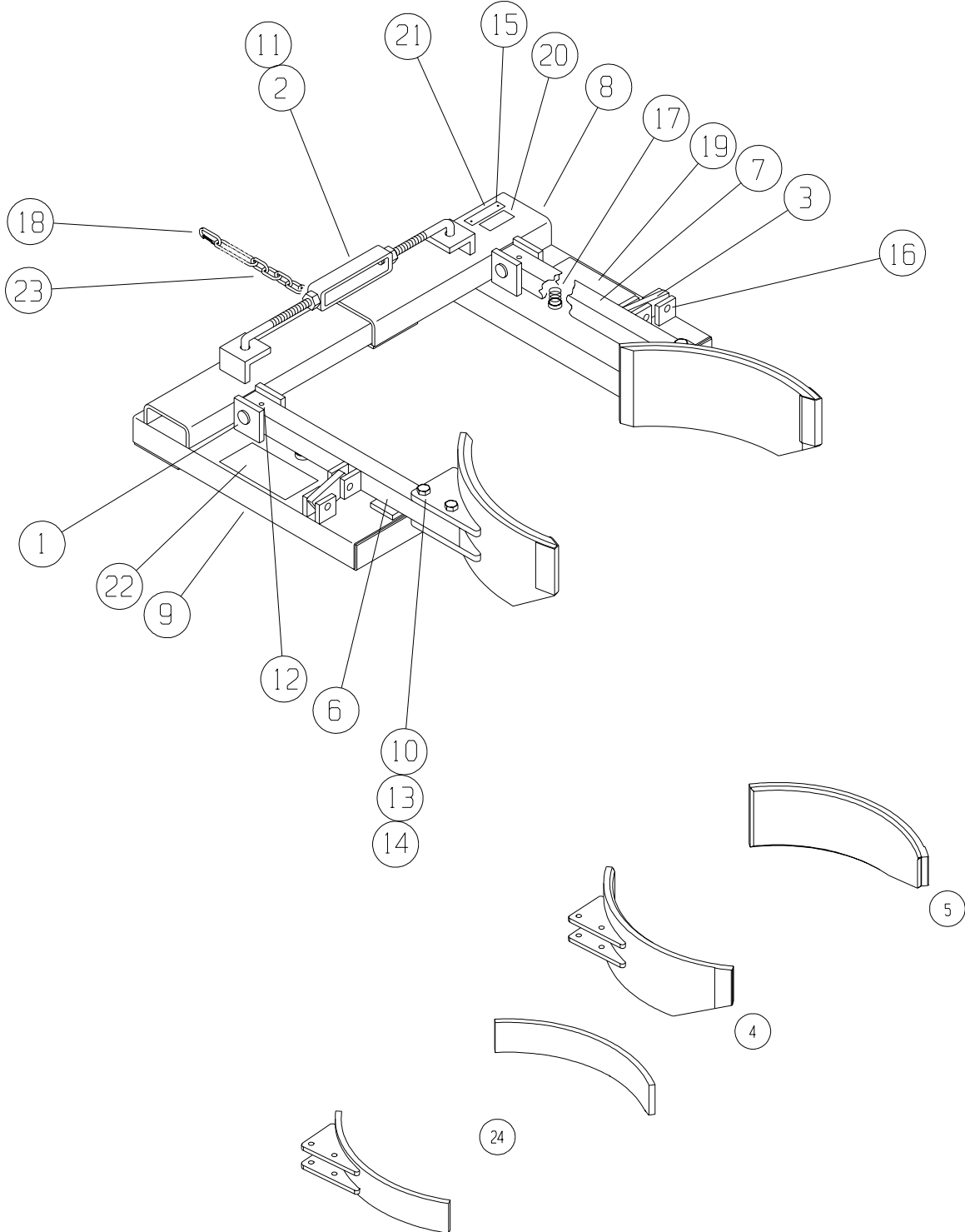
1. When transporting drums, it is recommended the drum be raised only a few inches off the floor.
2. Maximum load capacity is 1500 lbs.

### **AUTO GRIP UPS VERSION** **(ASSEMBLY INSTRUCTIONS)**

Slide right hand frame into tube of left hand frame. Attach the two halves by inserting turnbuckle into holes in angle iron ears. Secure by installing pins into holes in turnbuckle and bending pins to lock in place.



**PARTS BREAKDOWN**



## PARTS LIST

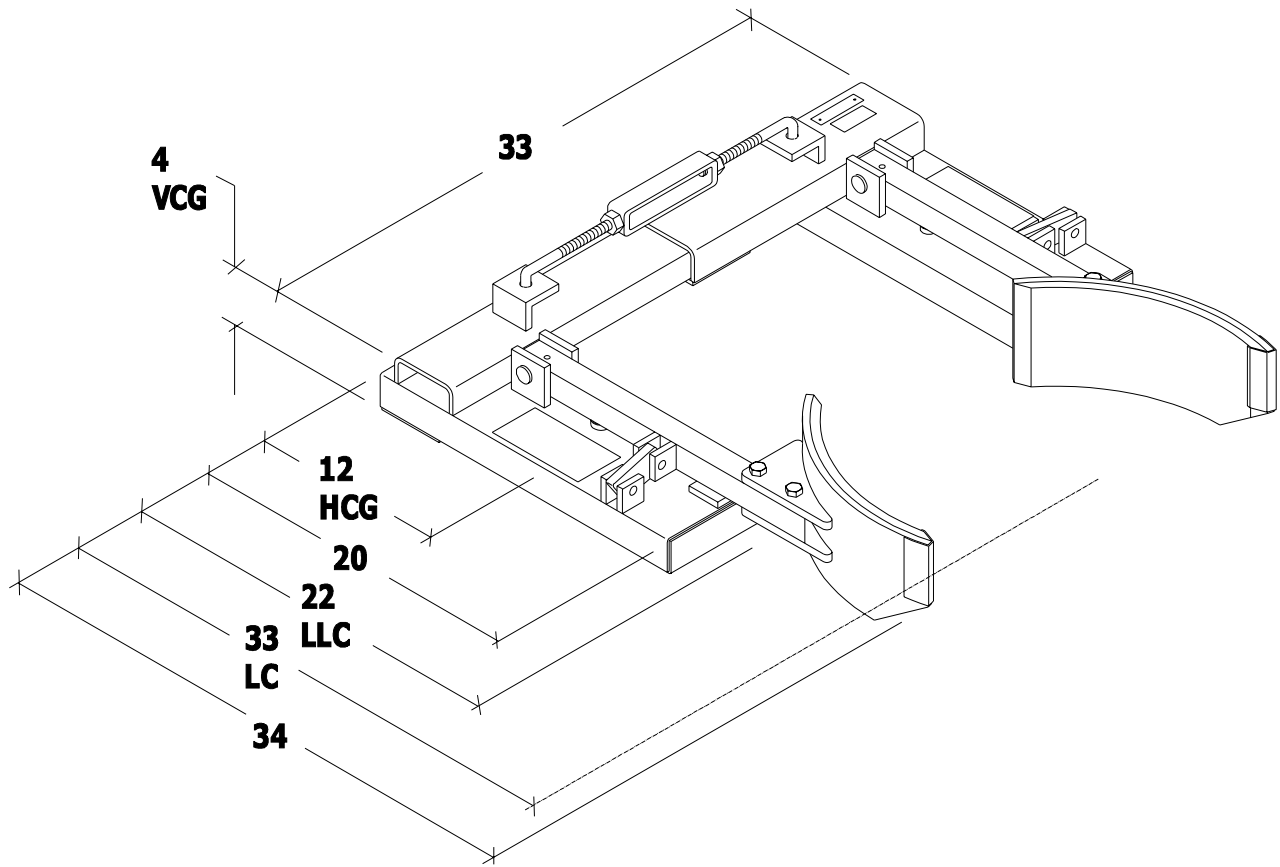
ITEM	PART NUMBER	DESCRIPTION	QTY.
1	F30060A9	PIN-PIVOT	2
2	F70675B3	TURNBUCKLE ASSY	1
3	F70011B3	LINK-JAW ARM/HT	2
4	F73817C6	6" RH JAW WLDMT	1
5	F73816C7	6" LH JAW WLDMT	1
6	F70129C0	ARM WLDMT-JAW RH	1
7	F70130C7	ARM WLDMT-JAW LH	1
8	F73814C9	F W-LH	1
9	F73815C8	F W-RH	1
10	Z10019A7	NUT-HEX FULL 7/16-14	4
11	Z10060A5	PIN-COTTER 3/16X2	2
12	Z10076A7	PIN-SPG 5/16X1-3/8	2
13	Z10159A7	S-HHC 7/16-14X3	4
14	Z10215A9	WASHER-7/16 LOCK	4
15	Z10222A0	RIVET-POP 1/8X1-4	2
16	Z10309A6	PIN-GRV 1/2X1-1/2	4
17	Z30045A3	SPG-DIE 3/4X1-1/2	2
18	Z30513A6	SNAP-WIRE 3/8 ZP	2
19	Z40461A7	DECAL-INST	1
20	Z40464A4	DECAL-LOAD CAP 1500	1
21	Z40473A3	TAG VC SERIAL	1
22	Z40901A5	LABEL-VALLEYCRAFT ID	1
23	F30200A0	CHAIN-60"	1
24	F75523C7	3" JAW WLDMT	2

## **TROUBLESHOOTING GUIDE**

PROBLEM	POSSIBLE CAUSE	SOLUTION
Drum slips out of grip	Turnbuckle not adjusted properly Rubber Jaw lining (6" jaw) is worn	Re-adjust turnbuckle setting (see operating instructions page 3). Replace jaws (refer to parts list pages 7-8).
Drum grip arms won't lift drum evenly	Broken Spring under arm.	Lift arm to check spring and refer to parts list if required.

# AUTO GRIP DRUM HANDLER

## LOAD CENTER SPECIFICATIONS



# Warranty & Limitation of Liability

Valley Craft products are warranted for a period of one (1) year from date of shipment from Valley Craft's plant to be free from defects in material and workmanship under correct use, normal operating and proper application. However, parts of other than Valley Craft manufacture are subject ONLY to the original manufacturer's warranty. Valley Craft's obligation under warranty shall be limited to repair or exchange, at Valley Craft's option, FOB origin factory, of any Valley Craft product or part which proves to be defective as provided herein. Valley Craft reserves the right to either inspect the product at Buyer's location, or require it to be returned to the factory for inspection. The warranty contained herein does not extend to goods damaged, or subject to accident, abuse or misuse after shipment from Valley Craft's factory, nor to goods altered or repaired by anyone other than an authorized Valley Craft representative.

Buyer or user shall not alter, modify or use a Valley Craft product for anything other than its intended function. Valley Craft shall not in any way be responsible for the consequences of any such alteration, modification or misuse.

VALLEY CRAFT MAKES NO EXPRESS WARRANTIES OTHER THAN THOSE WHICH ARE SPECIFICALLY DESCRIBED HEREIN. Any description of the goods sold hereunder, including any references to Buyer's specifications and any descriptions in catalogs, circulars and other written material published by Valley Craft, is for the sole purpose of identifying such goods and shall not create an express warranty that the goods shall conform to such descriptions.

THIS WARRANTY IS EXPRESSLY IN LIEU OF ALL OTHER WARRANTIES, EXPRESS OR IMPLIED. THERE ARE NO IMPLIED WARRANTIES OF MERCHANTABILITY OR FITNESS FOR A PARTICULAR PURPOSE. THIS WARRANTY STATES VALLEY CRAFT'S ENTIRE AND EXCLUSIVE LIABILITY, AND BUYER'S EXCLUSIVE REMEDY FOR ANY CLAIM FOR DAMAGES IN CONNECTION WITH VALLEY CRAFT PRODUCTS, THEIR DESIGN, SUITABILITY FOR USE, INSTALLATION OR OPERATION OR FOR ANY CLAIMED DEFECTS. VALLEY CRAFT WILL IN NO EVENT BE LIABLE FOR INCIDENTAL OR CONSEQUENTIAL DAMAGES WHATSOEVER, NOR FOR ANY SUM IN EXCESS OF THE PRICE RECEIVED FOR THE GOODS FOR WHICH LIABILITY IS CLAIMED.

# Technical Assistance/Warranty Procedure

## What's Covered:

- Parts and Labor to correct manufacturer's defect within one year of purchase.
- Freight Cost

## What's Not:

- Normal wear items (seal kits, bearings, tires, etc.)

## What Voids the Warranty:

- Dirt/Grime that directly causes malfunction of product
  - Abuse (i.e. Overloading, damaged, not properly maintained, etc.)
  - Product altered by customer
- \*See "Items not Under Warranty" below for items that have the warranty voided.

## Items Under Warranty (less than one year old):

- Warranty replacement parts are provided only when the problem can be identified with near certainty. If not, the customer will return item to Valley Craft, freight collect, for troubleshooting and/or repair. When repaired, product will be returned to customer, freight prepaid. Otherwise, customer may call local authorized service technician for assistance. . Under this arrangement, replacement parts will be sent at no charge but labor costs will NOT be covered.

## Items NOT Under Warranty (greater than one year old or \*having warranty voided):

- Customer will return item to Valley Craft, freight prepaid, for troubleshooting and/or repair. Valley Craft will call customer with \$\$ estimate of parts and labor for approval before repairing. Product will be returned to customer, freight collect.

Or

- Customer may call local authorized service technician for repairs at their own expense.

24008 1A2